

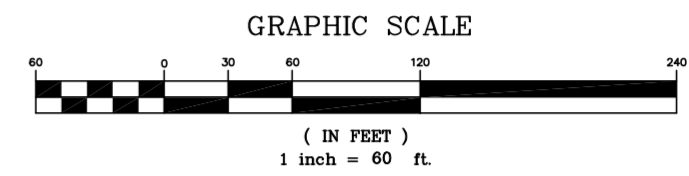
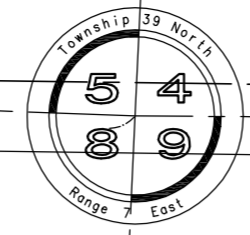
KESLINGER ROAD

Final Plat

# BLACKBERRY CREEK SUBDIVISION Unit No. 11

A PART OF THE NORTHEAST QUARTER OF SECTION 8, AND PART OF THE NORTHWEST QUARTER OF SECTION 9, TOWNSHIP 39 NORTH, RANGE 7 EAST OF THE THIRD PRINCIPAL MERIDIAN, IN KANE COUNTY, ILLINOIS.

P.I.N.:



- Surveyor's Notes:**
- "M" = Concrete Monument Set
  - Unless Otherwise Noted, 3/4"x24" Iron Pipe Set At All Lot Corners, Angle Points And Points Of Curvature.
  - F.I.P. = Found Iron Pipe
  - "B.S.L." = Building Setback Line
  - "P.U. & D." = Public Utility & Drainage Easement
  - Gap In Lot Numbering Hereon Due To Predefined Lot Numbering Within The Blackberry Creek Preliminary Plat.
  - All distances shown along curved lines are true arc distances.
  - No building shall be constructed nearer than 30 feet from any road right of way line.
  - A 10.0 foot-wide Drainage Easement and Utility Easement is hereby established along all rear lot lines and along all lot and parcel lines adjacent to dedicated roads and a 5.0 foot-wide Drainage Easement and Utility Easement is hereby established along all other lot lines, unless shown otherwise, all in accordance with the Drainage and Utility Easement Provisions established hereon.
  - Premises hereon platted are subject to Declaration of Covenants, Restrictions and Easements recorded contemporaneously herewith.

**NOTE:**  
BEARINGS AS SHOWN HEREON ARE BASED UPON AN ASSUMED DATUM.  
COORDINATES SHOWN HEREON ARE PER VILLAGE OF ELBURN HORIZONTAL CONTROL NETWORK.

FUTURE DEVELOPMENT  
(BLACKBERRY CREEK UNIT No. 13)

UNSUBDIVIDED

Northeast Corner Lot 2  
Blackberry Creek Unit No. 2

LOT 2  
BLACKBERRY CREEK UNIT No. 11  
(Recorded 05/10/2003 As Doc. 200303353)

ANDERSON ROAD  
(Heretofore Dedicated)

No.	Date	Revision Description	By

**GLEN D. KRISCH LAND SURVEYOR, Inc.**  
PROFESSIONAL DESIGN FIRM LICENSE No. 184-004233  
1716 South Finley Road • Lombard, IL 60148 • Phone: 630.627.5589  
Fax: 630.627.5594  
**SURVEYING - CONSULTING - CONSTRUCTION LAYOUT**  
Scale: 1"=60' Drawn: STK Chk'd: STK GDK File# 94069 CAD File: BlackberryCk.U11.dwg

PREPARED FOR:



SHEET 1 of 2

